

Procedure for Updating Acuvim II series meter (firmware 3.01 and above)

1. Hardware Installation

Connect the Computer with the Acuvim II series meter using RS485 communication converter. As shown in Figure 1.

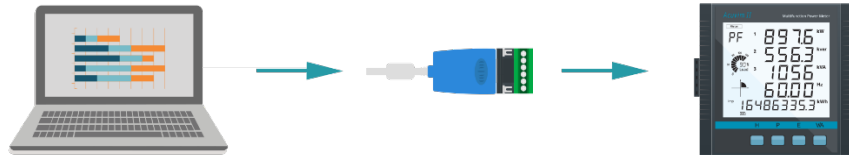


Figure 1: Connect the meter to the computer

2. Software Operation

Step 1: Connect the device according to Figure 1 and power on the meter.

Step 2: Open the Software “USProgram.exe”. A window will be displayed (as shown in figure 2 below).

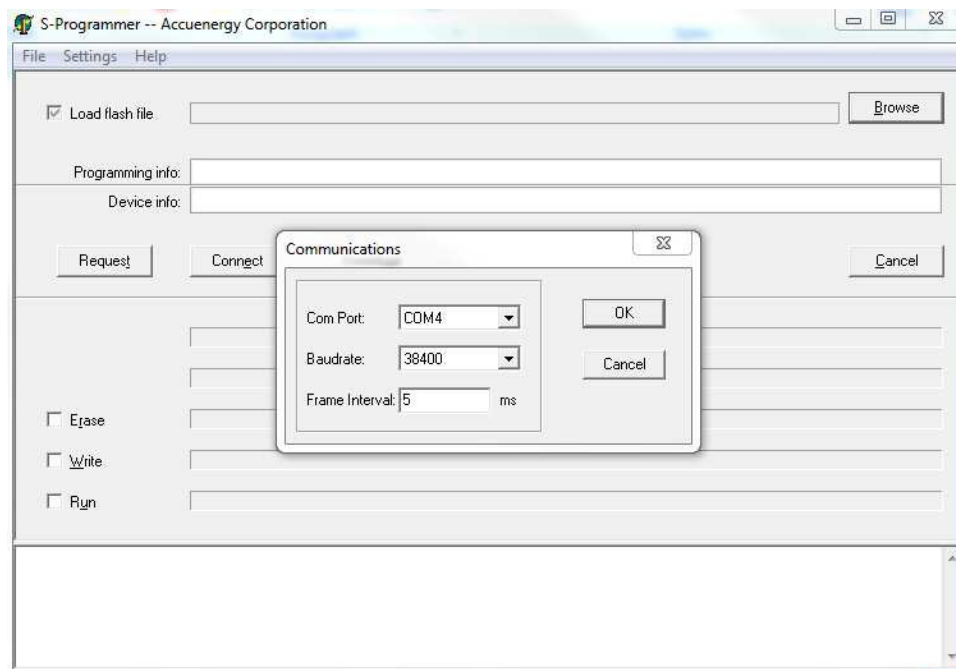


Figure 2

Step 3: Select the right 'Com Port', select the 'Baudrate' as “115200”. Click “OK”. The window, as shown in figure 3 below, will be displayed.

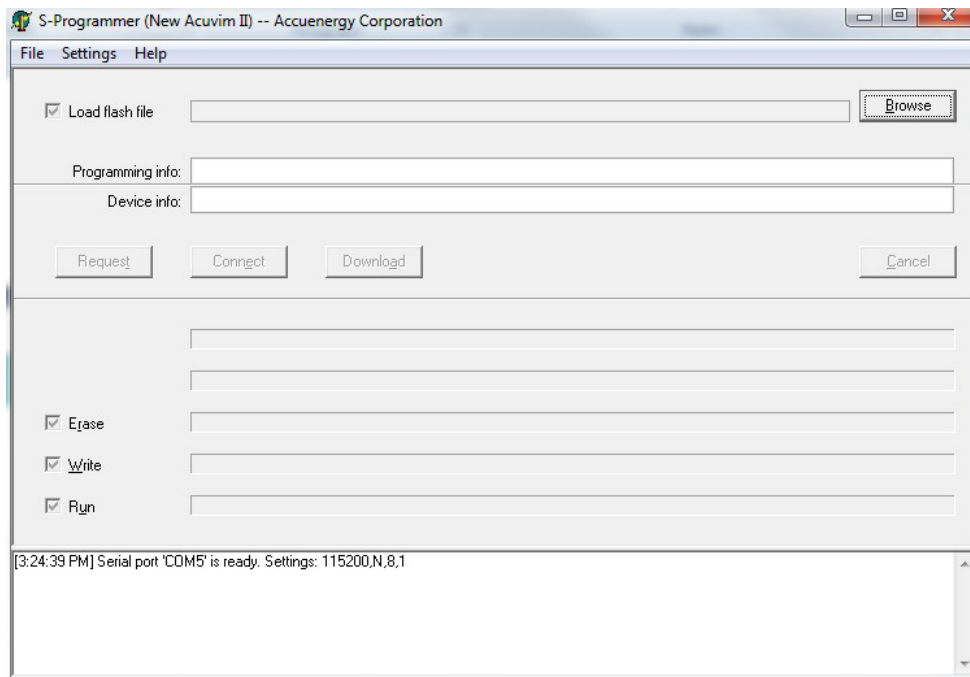


Figure 3: Serial port 'COMX' is ready. Settings 115200,N,8,1

Step 4: Click “Browse” to load the target flash file. As shown in figure 4 below

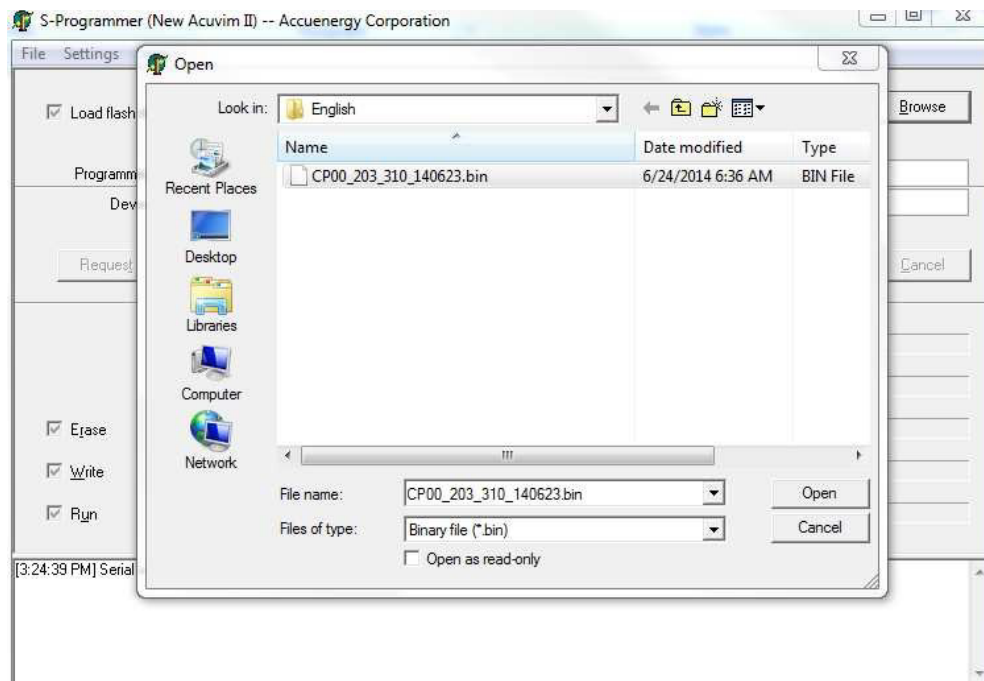


Figure 4

Locate the file in the appropriate folder.

NOTE: In the case above, the file name is: **CP00_203_310_140623.bin** Select the file and click “Open”.

The window in figure 5 should be displayed. It provides the Device type, Hardware version and software version for the update file under the ‘Programming info:’

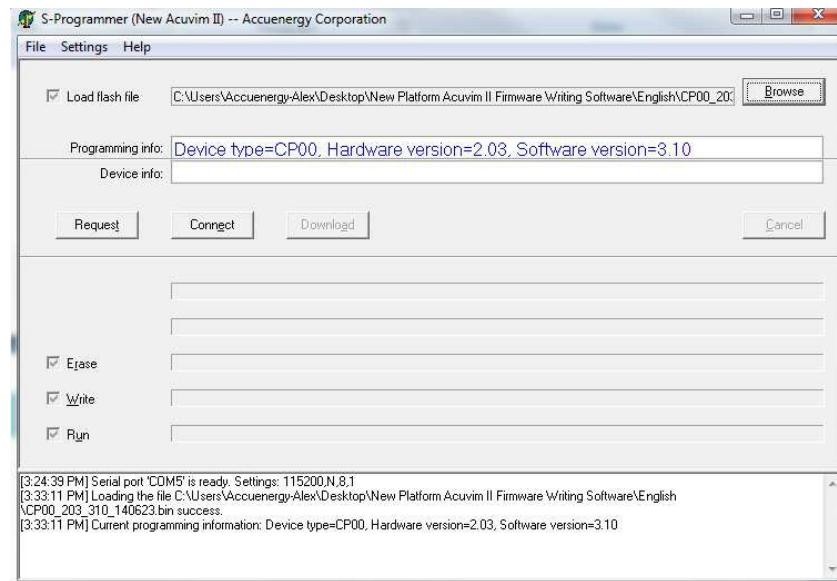


Figure 5

Step 5: Click ‘Request’. A window (as shown in figure 6) will be displayed.

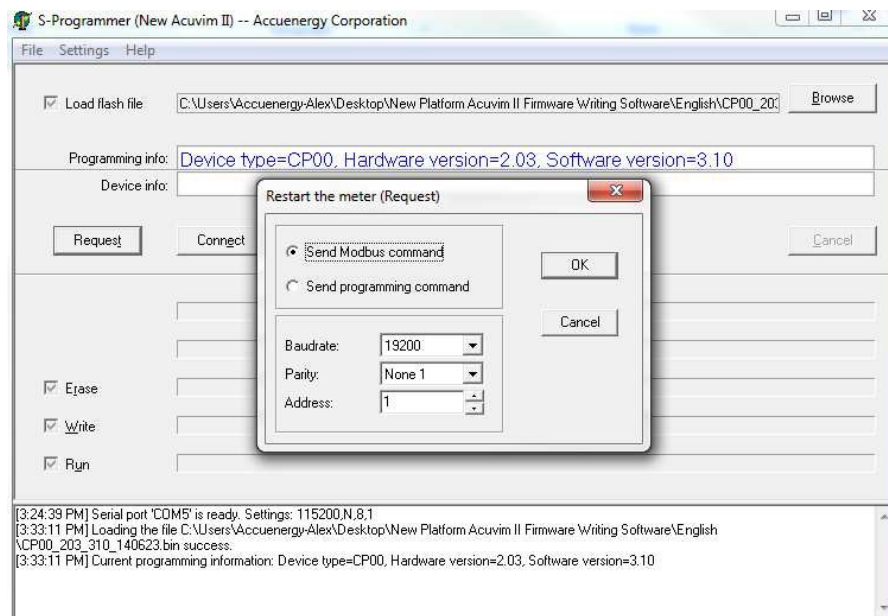


Figure 6

Choose the right Baudrate, parity and Address of your meter. Click “OK”

NOTE: For a meter with display, the default: baudrate=19200, parity=None1 and

Address=1

For a meter without display, the default: baudrate=9600, parity=None1 and Address = 1.

The ‘Device info’ section should now contain your meter’s information. As shown in figure 7.

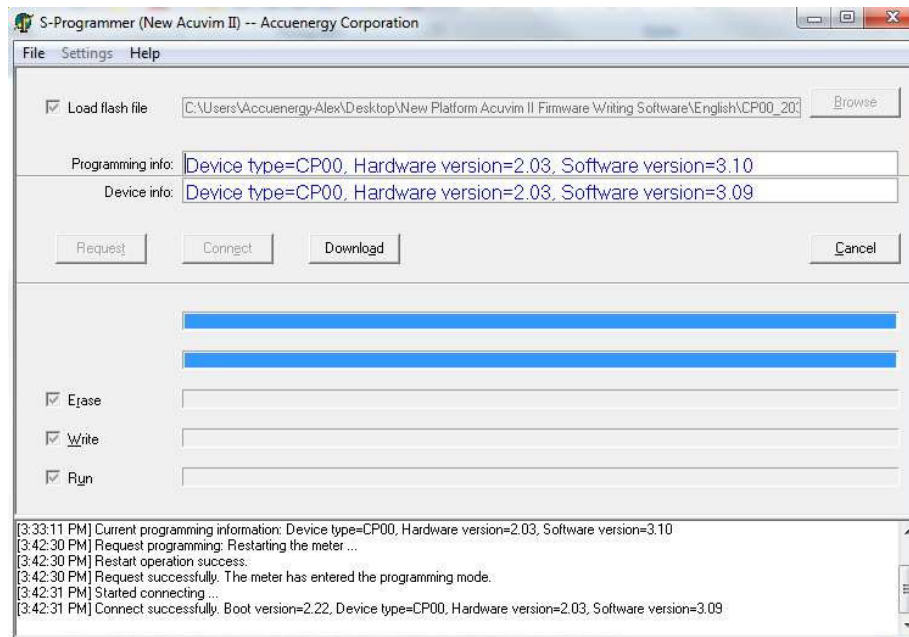


Figure 7

Step 6: Click ‘Download’. A warning will be displayed (as shown in figure 8 below). Click “Yes”.

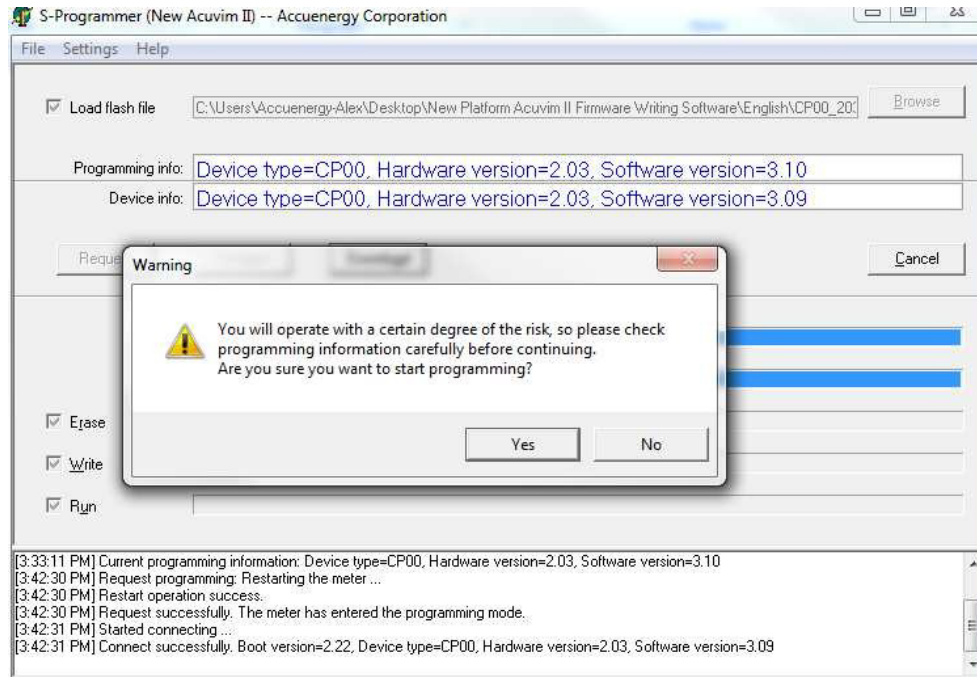


Figure 8

The updating process will begin, as shown in figure 9 below.

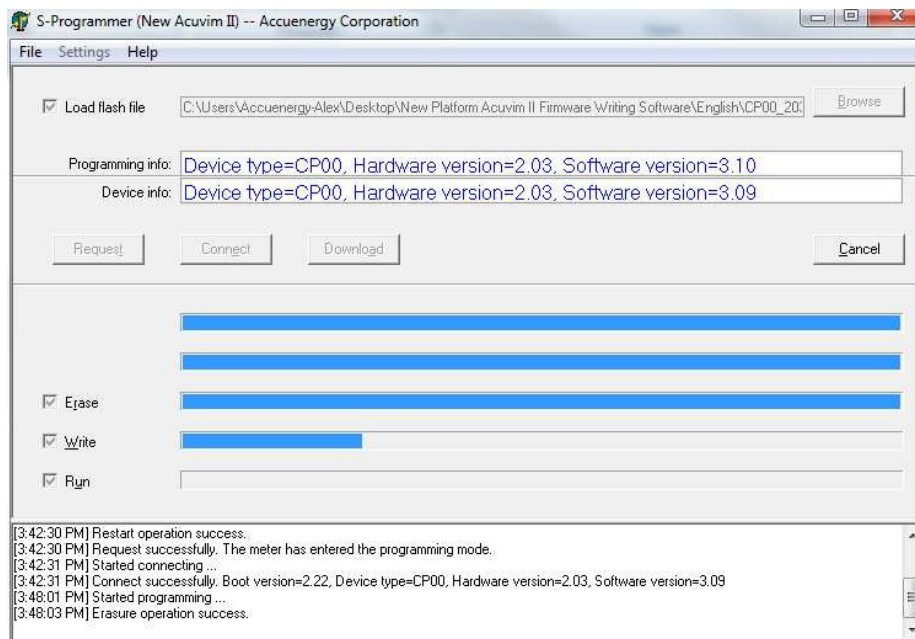


Figure 9

Step 7: Once the update is done, a prompt window will be displayed (as shown in figure 10 below). Click “OK”

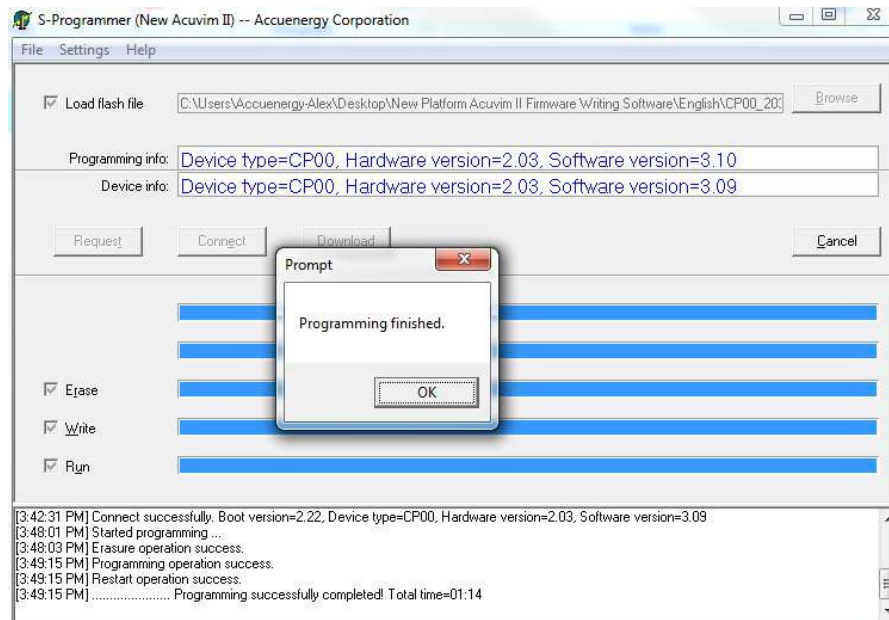


Figure 10

The meter has now been updated. To confirm the update, you can restart the meter and note the firmware version displayed on the screen for a few seconds **OR** check the “Device Information” using the meter’s software.

NOTE: To update other meters, you can start from step 5